






**305 Lieutenant Bowen Drive Bowen Mountain NSW**

4  3  6 

Nestled in a private location with incredible vast views towards the City skyline, this quality built residence stands on a level 1538sqm (approx) prize parcel. The home and grounds are beautifully finished to perfection, delivering a stunning modern retreat offering absolute comfort, style and functionality.

The home embraces easy living, entertaining and relaxing with a fresh and inviting atmosphere achieved with a balance of natural light, high ceilings and decorative inclusions. Comprised of four generous sized bedrooms, all having ceilings fans, two with built in robes and a master wing with walk in closet and ensuite.

Ideally located on the lower floor is the substantial media /

[For full version visit the website](https://www.bennettproperty.com.au)

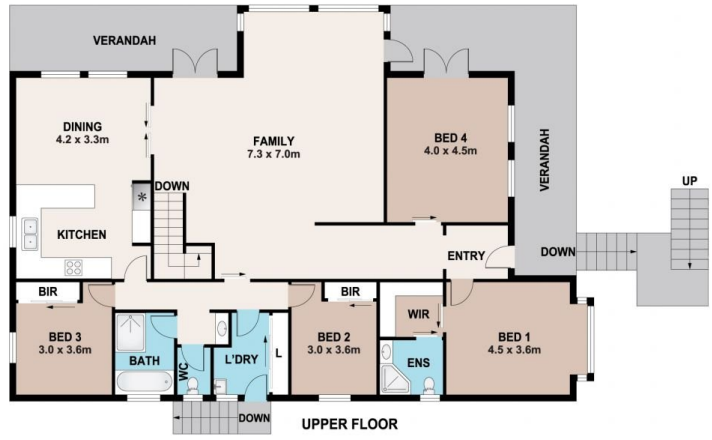
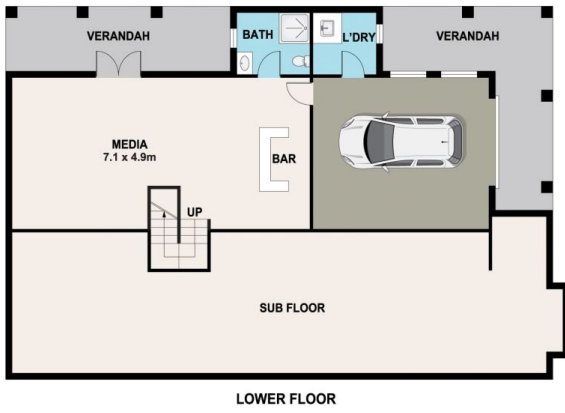
**Type** : House  
**Price** : \$1,180,000 - \$1,250,000  
**Land Size** : 1538 sqm  
**View** : <https://www.bennettproperty.com.au/sale/nsw/hawkesbury/bowen-mountain/residential/house/8134992>



**Michael Bennett**  
02 4578 1234



**Jacob Bennett**  
02 4578 1234



## 305 LIEUTENANT BOWEN DRIVE, BOWEN MOUNTAIN

### DISCLAIMER

PLANS SHOWN ARE FOR MARKETING PURPOSES ONLY, ALL DIMENSIONS ARE APPROXIMATE AND NOT TO SCALE. THEY ARE SUBJECT TO ERRORS AND INACCURACIES AND NO LIABILITY WILL BE ACCEPTED. INTERESTED PARTIES SHOULD MAKE THEIR OWN ENQUIRIES.

