



## 9 Golden Grove Bligh Park NSW

4  1  1 

Nestled on a spacious 671 square metre parcel on a quiet sought after street.

This lovely home is located in the desired front section of Bligh Park. The quality residence offers a convenient low fuss lifestyle and the home has been meticulously re-styled and updated from top to bottom - completely move in ready!

Every inch of the house has been lovingly improved upon and consists of brand new carpets, blinds, curtains, hybrid flooring and has been freshly painted throughout. Providing a great flowing layout, the floor plan caters for the entire family with formal lounge and dining areas, split system air conditioning and a second lounge/living area or family room.

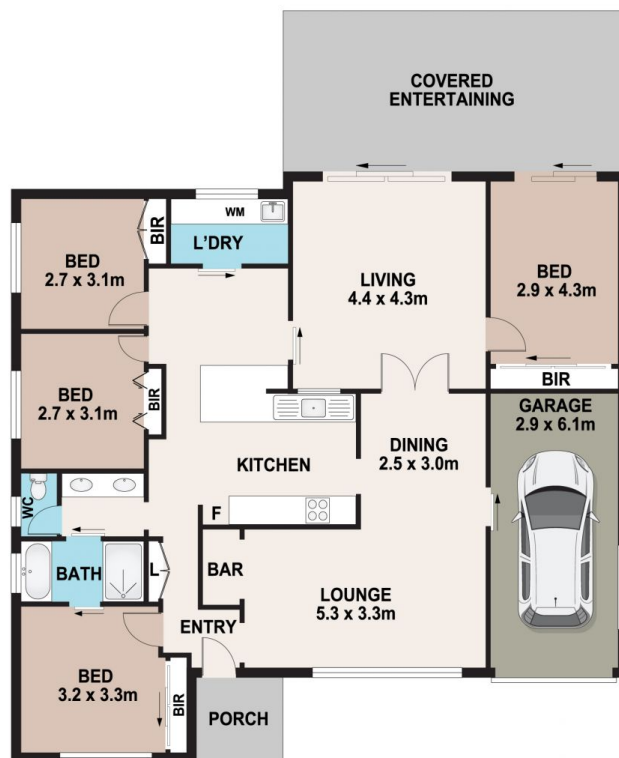
**Price** : \$ 980,000  
**Land Size** : 671 sqm  
**View** : <https://www.bennettproperty.com.au/sale/nsw/hawkesbury/bligh-park/residential/house/8035139>



**Michael Bennett**  
02 4578 1234



**Jacob Bennett**  
02 4578 1234



## 9 GOLDEN GROVE, BLIGH PARK

### DISCLAIMER

PLANS SHOWN ARE FOR MARKETING PURPOSES ONLY. ALL DIMENSIONS ARE APPROXIMATE AND NOT TO SCALE. THEY ARE SUBJECT TO ERRORS AND INACCURACIES AND NO LIABILITY WILL BE ACCEPTED. INTERESTED PARTIES SHOULD MAKE THEIR OWN ENQUIRIES.

