






## 14 Andrew Town Place Richmond NSW

3  1  2 

As soon as you pull up to this home, you will be impressed by the stylish finishes, landscaped gardens and large front verandah.

Open plan living and dining area flows out to child and pet friendly yard, ideal for entertaining with sandstone outdoor fireplace, entertaining area, level lawn, established gardens and shade sails. Modern kitchen with stone bench tops, stainless steel appliances, gas cook top and breakfast bar. Generous updated bathroom with floor to ceiling tiles, corner spa bath and separate shower. Fitted laundry with direct access to garden.

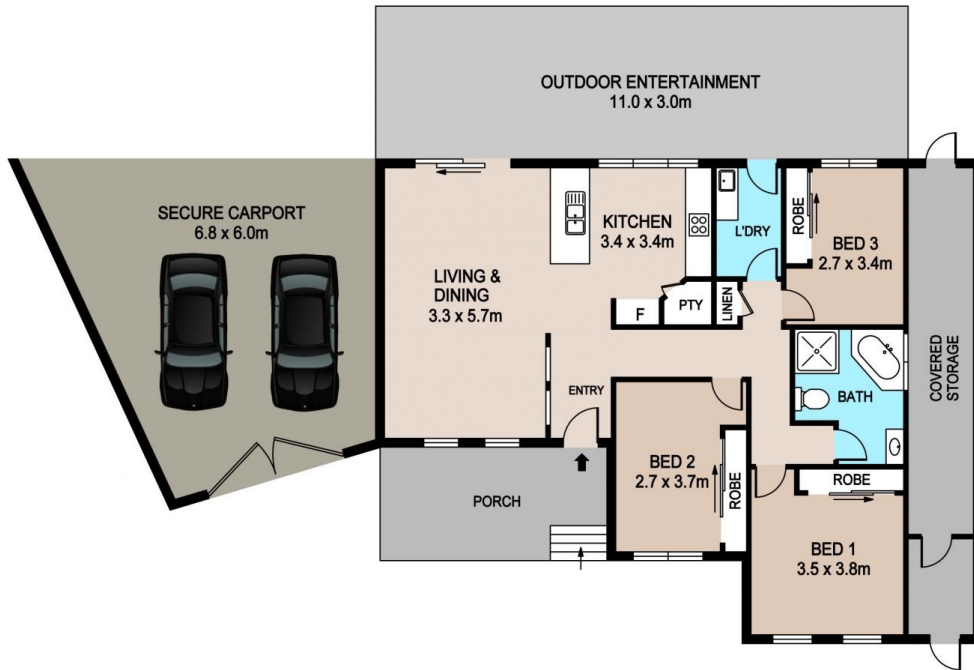
Three bedrooms with built-ins, split system air conditioning, gas heating point, instantaneous gas hot water, NBN and

[For full version visit the website](https://www.bennettproperty.com.au)

**Type** : House  
**Land Size** : 550 sqm  
**View** : <https://www.bennettproperty.com.au/sale/nsw/hawkesbury/richmond/residential/house/6213835>



**Michael Bennett**  
 02 4578 1234



## 14 ANDREW TOWN PLACE, RICHMOND

### DISCLAIMER

PLANS SHOWN ARE FOR MARKETING PURPOSES ONLY. ALL DIMENSIONS ARE APPROXIMATE AND NOT TO SCALE. THEY ARE SUBJECT TO ERRORS AND INACCURACIES AND NO LIABILITY WILL BE ACCEPTED. INTERESTED PARTIES SHOULD MAKE THEIR OWN INQUIRES.

