



### 1/37 Neptune Crescent Bligh Park NSW

3  1  1 

Situated opposite Colonial Reserve with kids playground, this neat and tidy, single level duplex is an ideal first home or investment.

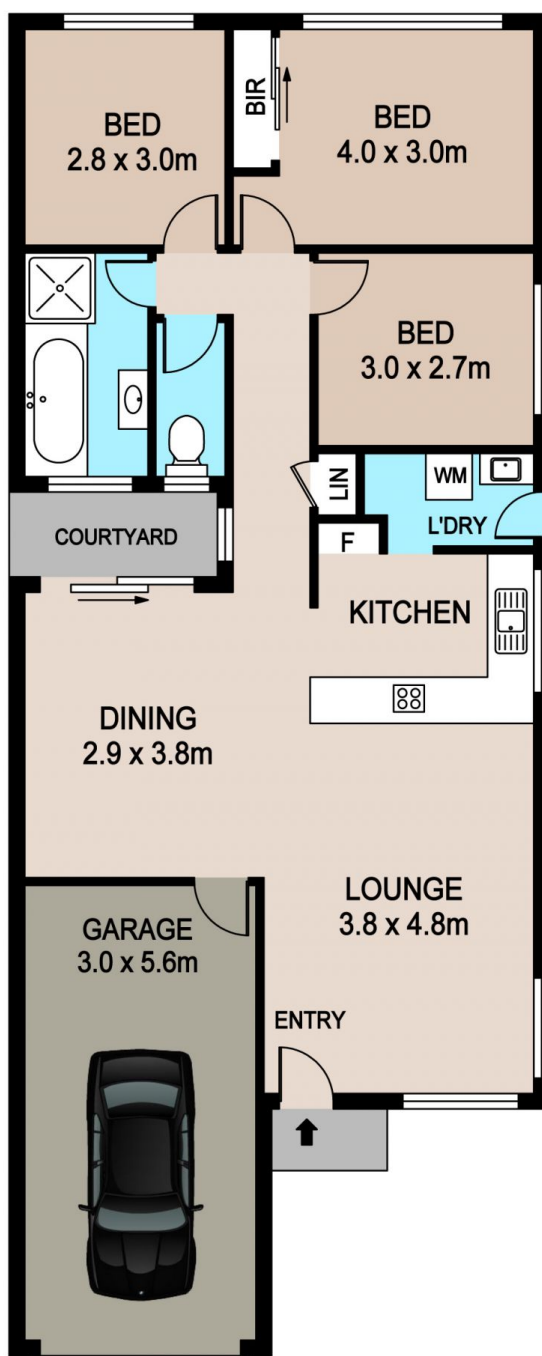
Spacious lounge room flows to separate dining, large well maintained kitchen with gas cook top, internal laundry with access to rear, fully fenced courtyard. Three bedrooms, one with built-in robe, bathroom with bath tub and separate toilet.

No strata fees payable! There is also a great, long term tenant currently paying \$390 per week who is willing to stay on, if for investment purposes. The property can also be offered with vacant possession if preferred.

**Type** : House  
**Price** : \$ 440,000  
**Land Size** : 293 sqm  
**View** : <https://www.bennettproperty.com.au/sale/nsw/hawkesbury/bligh-park/residential/house/6213833>



**Michael Bennett**  
**02 4578 1234**



## 1/37 NEPTUNE CRESCENT, BLIGH PARK

### DISCLAIMER

PLANS SHOWN ARE FOR MARKETING PURPOSES ONLY. ALL DIMENSIONS ARE APPROXIMATE AND NOT TO SCALE. THEY ARE SUBJECT TO ERRORS AND INACCURACIES AND NO LIABILITY WILL BE ACCEPTED. INTERESTED PARTIES SHOULD MAKE THEIR OWN INQUIRES.