



## 233 Lieutenant Bowen Drive Bowen Mountain NSW

4 2 1

Boasting versatile living spaces and a lovely indoor/outdoor flow, this two storey home is picturesquely set on a large 1,789sqm block which backs onto the National Park. With four bedrooms plus study and multiple living spaces, the home provides flexibility for the growing family. Separate lounge and dining areas, two additional living spaces, timber floors, open plan modernised kitchen with stainless-steel appliances and gas cooking. Main bedroom with ensuite and built-in robe plus additional main bathroom with spa bath. The covered rear deck overlooks the fully fenced, terraced yard with views out across the valley to the city lights. Enjoy entertaining all year around with 2 x slow combustion fireplaces and split-system air conditioner. Plenty of storage with single carport, under-house storage and garden shed with power. This affordable home offers

**Type** : House  
**Price** : \$ 650,000  
**Land Size** : 1789 sqm  
**View** : <https://www.bennettproperty.com.au/sale/nsw/hawkesbury/bowen-mountain/residential/house/6213761>

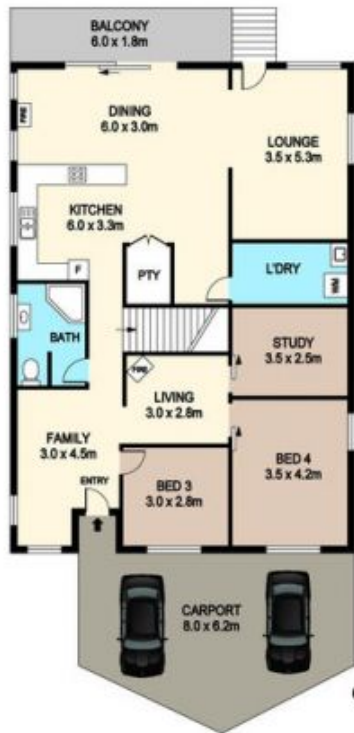


**Scott Lee**  
0417 324 812

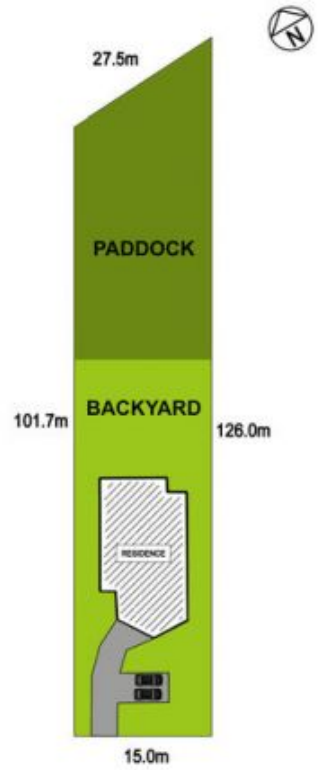


**Maurice Mantovani**  
0409 121 905

[For full version visit the website](https://www.bennettproperty.com.au)



SITE PLAN



## 233 LIEUTENANT BOWEN DRIVE BOWEN MOUNTAIN

**DISCLAIMER**

PLANS SHOWN ARE FOR MARKETING PURPOSES ONLY. ALL DIMENSIONS ARE APPROXIMATE AND NOT TO SCALE. THEY ARE SUBJECT TO ERRORS AND INACCURACIES AND NO LIABILITY WILL BE ACCEPTED. INTERESTED PARTIES SHOULD MAKE THEIR OWN INQUIRIES.

