



## 5 Tim Whiffler Place Richmond NSW

3 1 2

Privately positioned in a peaceful cul-de-sac, this impeccable family home requires nothing other than you and your bags!

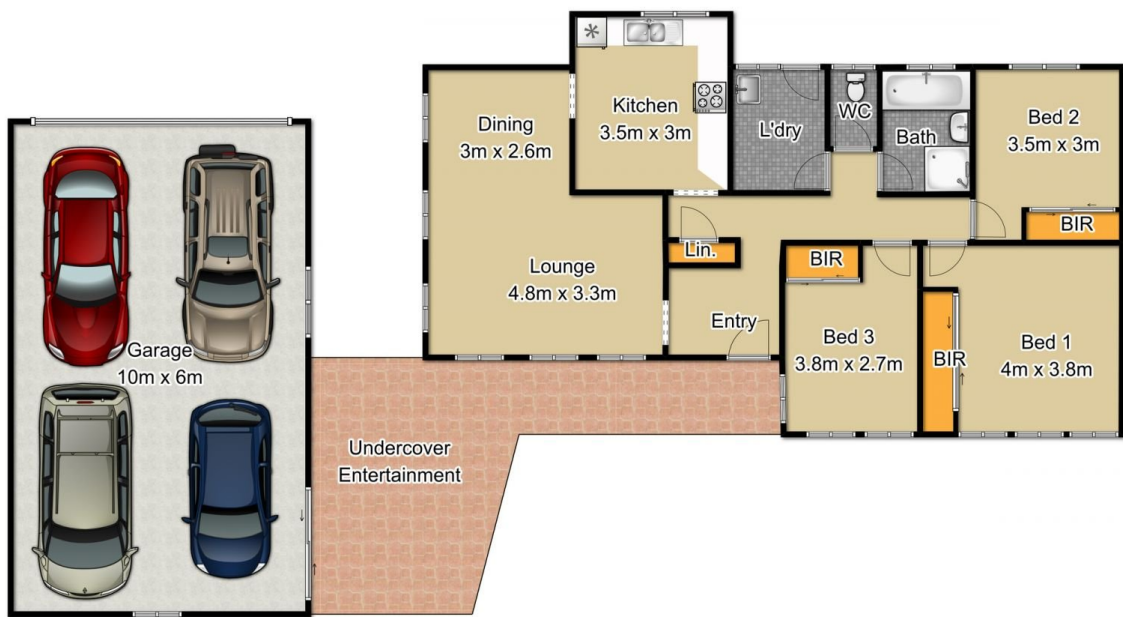
Enjoy comfort and quality at every turn with ducted air, downlights, and a sleek kitchen with glass splashbacks. All 3 bedrooms have built-in robes and there is a beautiful, newly renovated bathroom. Full length windows bathe the open plan living areas in natural light, and overlook a fantastic, paved outdoor entertaining and BBQ area. This seamlessly connects with low-maintenance, immaculately landscaped lawns and gardens .... all fully fenced and irrigated lawn, so you can just sit back and relax! A huge 10m x 6m lock-up garage with an auto door and work shop area provides a home for all your vehicles and toys. In a great location just a very short drive from the shopping

**Type** : House  
**Price** : \$ 705,000  
**Land Size** : 653.7 sqm  
**View** : <https://www.bennettproperty.com.au/sale/nsw/hawkesbury/richmond/residential/house/6213747>



**Michael Bennett**  
 02 4578 1234

[For full version visit the website](https://www.bennettproperty.com.au)



## 5 Tim Whiffler Place, Richmond

Fixtures & Fittings are for display purposes only, not to scale.



**bennett**property