

## 285 Carrington Road LONDONDERRY NSW

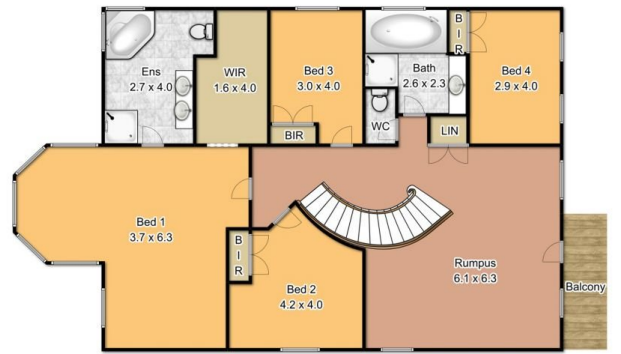
4  2  4 

Quality lifestyle in the centre of town. Beautifully presented family residence with upmarket inclusions. Curved feature staircase and chandelier. Formal Living and Dining Rooms. Spacious Rumpus Room. Luxury main bedroom suite with feature window. Magnificent entry with circular driveway. Extra large block (approx. 1.25 acres, 5000 square metres). Fully landscaped and fenced. Separate gated entry to a large shed (12 metres x 9 metres) with 3 phase power. All level with town water. Close to St Pauls Grammar, shops and transport. Only minutes from Penrith.

**Type** : House  
**Land Size** : 5000 sqm  
**View** : <https://www.bennettproperty.com.au/sale/nsw/hawkesbury/londonderry/residential/house/6213237>



**Michael Bennett**  
02 4578 1234



Measurements are approximate only.  
 Not to scale. For illustrative purposes only.