



168 Francis Street RICHMOND NSW

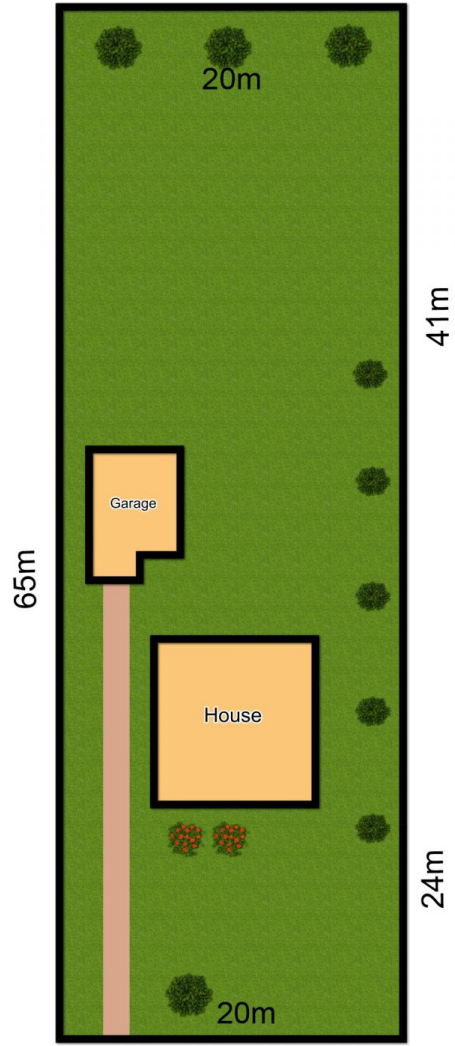
3 2 1

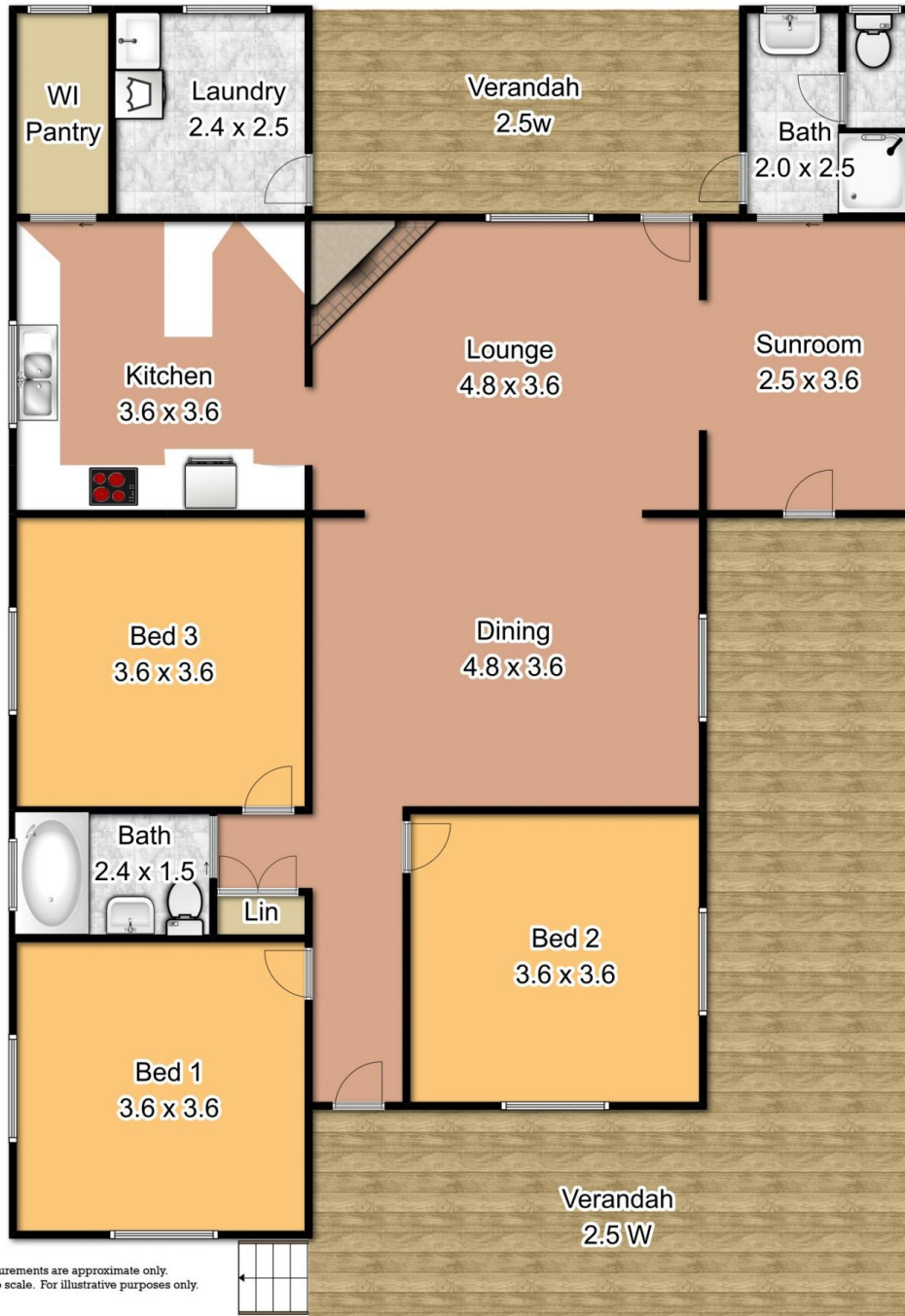
Circa early 1900's - the first time offered for sale in over 40 years. Delightful timber homestead with original character and appeal. Wide verandahs with rural outlook. Spacious living areas with open fireplace. Ducted airconditioning. High ceilings with decorative cornices, picture rails. 3 double bedrooms and 2 bathrooms. Modern kitchen with a dishwasher and a walk-in pantry. Side access to single garage. Mature trees and gardens. Extra large block (approx. 1309 square metres) with development potential (STCA). Popular Francis Street location. Walk to Pughs lagoon, shopping centre.

Type : House
Land Size : 1309 sqm
View : <https://www.bennettproperty.com.au/sale/nsw/hawkesbury/richmond/residential/house/6213193>



Michael Bennett
02 4578 1234





Measurements are approximate only.
 Not to scale. For illustrative purposes only.